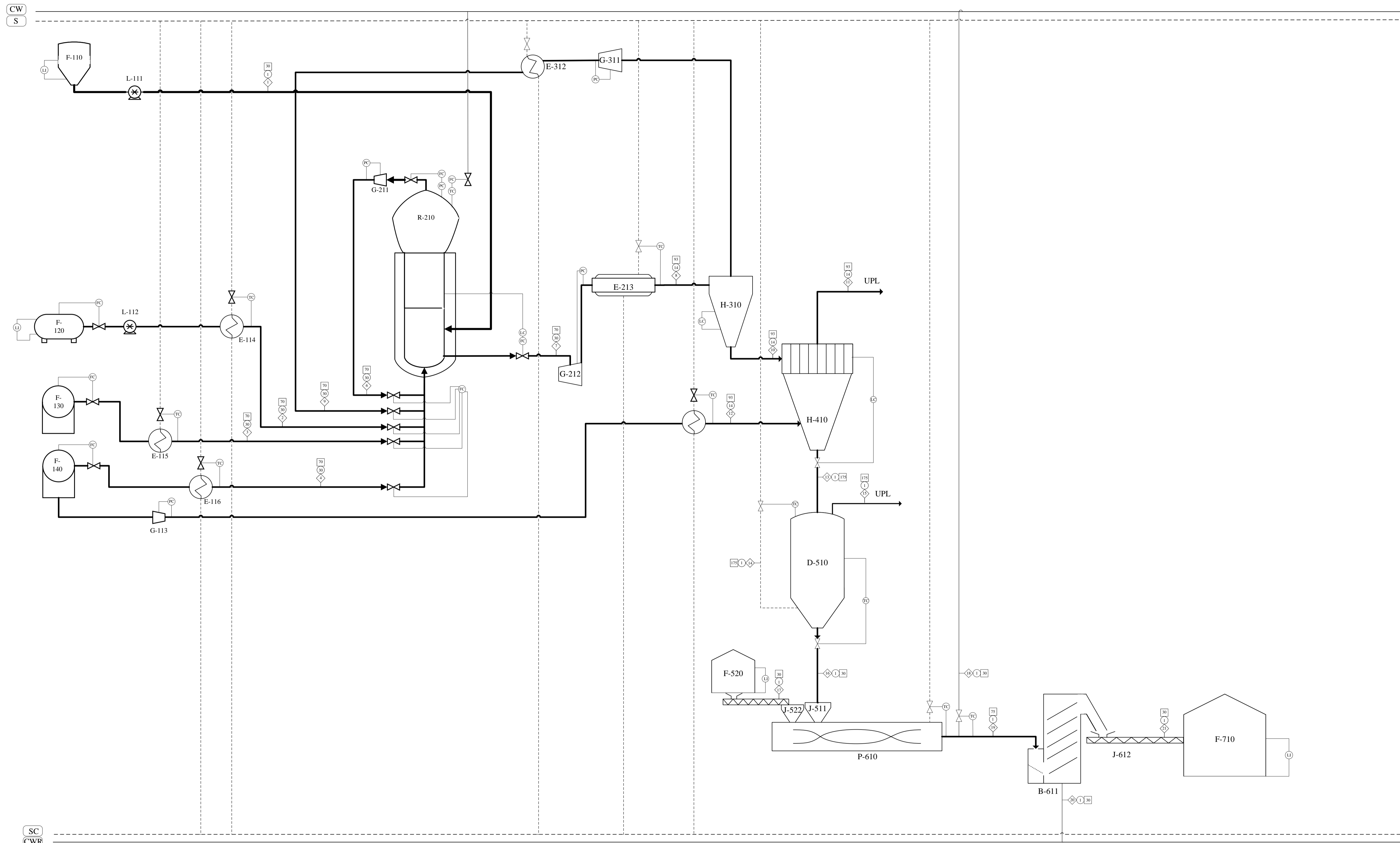


FLWSHEET PABRIK POLIPROPILEN DARI PROPILLEN DENGAN PROSES UNIPOL

Keterangan



	Flow mass (kg/jam)
	Temperature (°C)
	Pressure (atm)
	Cooling Water
	Steam
	Steam Condensate
	Cooling Water Return

28	F-710	SILO POLIPROPILEN	1
27	J-612	BELT CONVEYOR	1
26	B-611	CENTRIFUGAL DRYER	1
25	P-610	EXTRUDER PELLETIZER	1
24	J-522	HOPPER ANTI-OXIDANT	1
23	J-521	BELT CONVEYOR ANTI-OXIDANT	1
22	F-520	TANGKI PENYIMPANAN ANTI-OXIDANT	1
21	J-511	HOPPER	1
20	D-510	BLOW TANK	1
17	H-410	BAG FILTER	1
19	E-312	HEATER RECYCLE	1
18	G-311	KOMPRESOR REFLUKS	1
16	H-310	CYCLONE	1
14	E-213	FLASH LINE	1
13	G-212	EXPANDER REAKTOR	1
12	G-211	KOMPRESOR REFLUKS	1
11	R-210	BUBBLE FLUIDIZED BED REAKTOR	1
10	E-116	HEAT EXCHANGER NITROGEN	1
9	E-115	HEAT EXCHANGER HIDROGEN	1
8	E-114	HEAT EXCHANGER PROPILLEN	1
7	G-113	EXPANDER NITROGEN	1
6	L-112	POMPA PROPILLEN	1
5	L-111	POMPA KATALIS	1
4	F-140	TANGKI PENYIMPANAN NITROGEN	1
3	F-130	TANGKI PENYIMPANAN HIDROGEN	1
2	F-120	TANGKI PENYIMPANAN PROPILLEN	8
1	F-110	TANGKI PENYIMPANAN KATALIS	1

NAMA ALAT **JUMLAH**

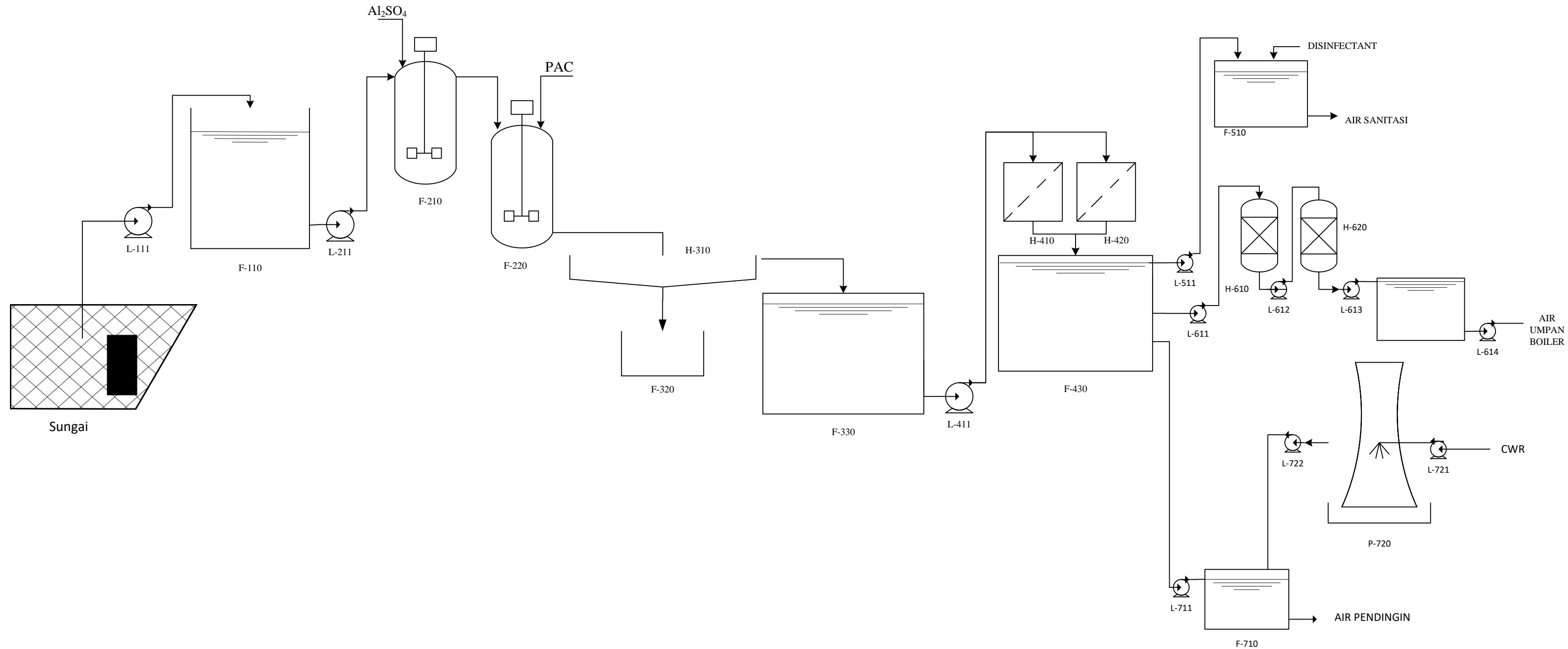
: FAJRIN KARUNIA
 NPM : 17031010126
 DOSEN PEMBIMBING : DR. IR. SUSILOWATI, M T

**FLWSHEET PABRIK POLIPROPILEN
 DARI PROPILLEN DENGAN PROSES UNIPOL**

 PROGRAM STUDI TEKNIK KIMIA
 FAKULTAS TEKNIK
 UNIVERSITAS PEMBANGUNAN NASIONAL "VETERAN"
 JAWA TIMUR
 2024

SC
CWR

Komponen/Aliran	1	2	3	4	5	6	7	8	9	10	11	12	13	14	15	16	17	18	19	20	21	
TiCl4	1269.1541						1269.1541	1269.1541		1269.1541			1269.1541		1269.1541							
Al(C2H5)3	625.1058						625.1058	625.1058		625.1058			625.1058		625.1058							
C3H6		7501.2693			150.0254	150.0254	3.0005	3.0005	0.6001	2.4004	2.4004											
H2			1.8836																			
N2				52.9840	51.9243	41.3275	52.9840	52.9840	10.5968	42.3872	52.9840	10.5968										
(C3H6)n							7500.7525	7500.7525		7500.7525			7500.7525			7500.7525			7575.7600		7575.7600	
C73H108O12																	75.0075					
Steam														470.1800	470.1800							
H2O																		32850.2743	32850.2743	32833.8492	16.4251	
TOTAL	1894.2599	7501.2693	1.8836	52.9840	201.9497	191.3529	9450.9969	9450.9969	11.1969	9439.8000	55.3844	10.5968	9395.0124	470.1800	2364.4399	7500.7525	75.0075	32850.2743	40426.0343	32833.8492	7592.1851	



26	L-722	POMPA RECYCLE AIR PENDINGIN
25	L-721	POMPA COOLING TOWER
24	L-711	POMPA BAK AIR PENDINGIN
23	P-720	COOLING TOWER
22	F-710	BAK AIR PENDINGIN
21	F-630	BAK PENAMPUNG AIR BOILER
20	H-620	ANION EXCHANGER
19	H-610	KATION EXCHANGER
18	L-614	POMPA BOILER
17	L-613	POMPA BAK PENAMPUNG AIR BOILER
16	L-612	POMPA ANION EXCHANGER
15	L-611	POMPA KATION EXCHANGER
14	F-510	BAK SANITASI
13	L-511	POMPA BAK SANITASI
12	L-411	POMPA SAND FILTER
11	F-430	BAK AIR BERSIH SAND FILTER
10	H-420	SAND FILTER 2
9	H-410	SAND FILTER 1
8	F-330	BAK PENAMPUNG AIR BERSIH CLARIFIER
7	F-320	BAK PENAMPUNG FLOK
6	H-310	CLARIFIER
5	F-220	TANGKI FOAKULASI
4	F-210	TANGKI KOAGULASI
3	L-211	POMPA TANGKI KOAGULASI
2	F-110	BAK PENAMPUNG AIR SUNGAI
1	L-111	POPMA AIR SUNGAI
NO	KODE	NAMA ALAT

DIGAMBAR OLEH : FAJRIN KARUNIA
 NPM : 17031010126
 DOSEN PEMBIMBING : DR. IR. SUSILOWATI, M T



**FLWSHEET PABRIK POLIPROPILEN
 DARI PROPILLEN DENGAN PROSES UNIPOL**

**PROGRAM STUDI TEKNIK KIMIA
 FAKULTAS TEKNIK
 UNIVERSITAS PEMBANGUNAN NASIONAL "VETERAN"
 JAWA TIMUR
 2024**