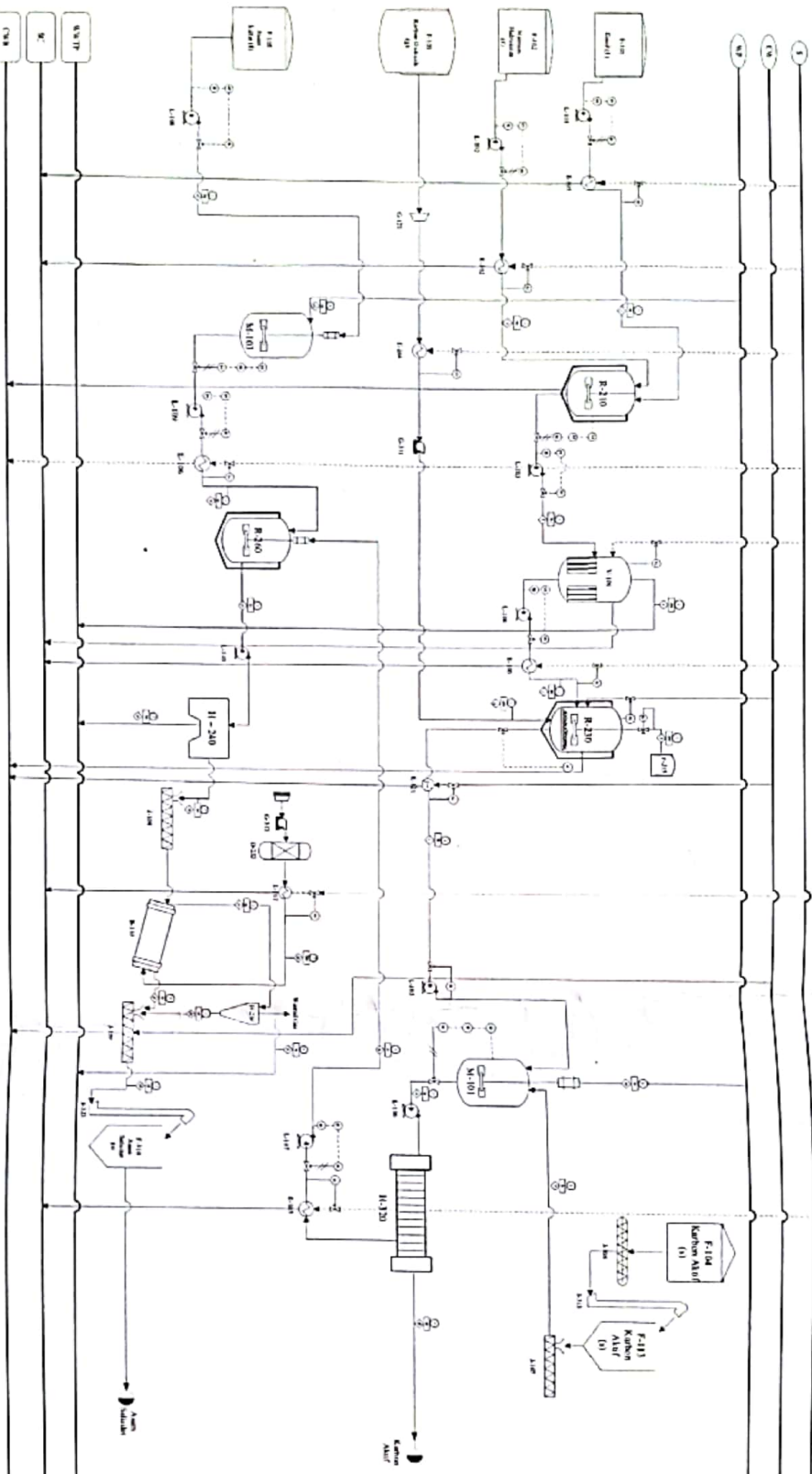


PABRIK ASAM SALISILAT BERBAHAN BAKU FENOL DENGAN PROSES KOLBE - SCHMITT



No	Aliran Massa (kg/jam)																									
	1	2	3	4	5	6	7	8	9	10	11	12	13	14	15	16	17	18	19	20	21	22	23	24	25	
Aliran	24817,3009	807,1419	807,1419	807,1419	9109	210,2027	8986,2515	6423,5601	1826,7013	7315,1650	1917,5676	59,9062	59,9062	6820,7281	8408,1501	172,6183	771,7914	0,6811	171,5524	0,8611	0,0006	6,062	0,0306	6,0622	0,0006	0,0006
Phenol	41,8410	3183,7408	2355,0570	4817,8700	237,7829	1,9108	382,0849	382,0849	76,4098	305,6101	6,1128	6,1128	6,1128	6,1128	6,1128	6,1128	6,1128	6,1128	6,1128	6,1128	6,1128	6,1128	6,1128	6,1128	6,1128	6,1128
Sodium Hydroxide	1489,051	382,0849	382,0849	382,0849	382,0849	382,0849	382,0849	382,0849	382,0849	382,0849	382,0849	382,0849	382,0849	382,0849	382,0849	382,0849	382,0849	382,0849	382,0849	382,0849	382,0849	382,0849	382,0849	382,0849	382,0849	382,0849
Carbon Dioxide		8124,0065	8124,0065	8124,0065	8124,0065	8124,0065	8124,0065	8124,0065	8124,0065	8124,0065	8124,0065	8124,0065	8124,0065	8124,0065	8124,0065	8124,0065	8124,0065	8124,0065	8124,0065	8124,0065	8124,0065	8124,0065	8124,0065	8124,0065	8124,0065	8124,0065
Water																										
Steam																										
Salicylic Acid																										
Waste																										

No	Equipment	Material	Flow
1	R-100	Phenol	1
2	R-100	Sodium Hydroxide	2
3	R-100	Carbon Dioxide	3
4	R-100	Water	4
5	R-100	Steam	5
6	R-100	Salicylic Acid	6
7	R-100	Waste	7
8	R-100	Water	8
9	R-100	Steam	9
10	R-100	Salicylic Acid	10
11	R-100	Waste	11
12	R-100	Water	12
13	R-100	Steam	13
14	R-100	Salicylic Acid	14
15	R-100	Waste	15
16	R-100	Water	16
17	R-100	Steam	17
18	R-100	Salicylic Acid	18
19	R-100	Waste	19
20	R-100	Water	20
21	R-100	Steam	21
22	R-100	Salicylic Acid	22
23	R-100	Waste	23
24	R-100	Water	24
25	R-100	Steam	25
26	R-100	Salicylic Acid	26
27	R-100	Waste	27
28	R-100	Water	28
29	R-100	Steam	29
30	R-100	Salicylic Acid	30
31	R-100	Waste	31
32	R-100	Water	32
33	R-100	Steam	33
34	R-100	Salicylic Acid	34
35	R-100	Waste	35
36	R-100	Water	36
37	R-100	Steam	37
38	R-100	Salicylic Acid	38
39	R-100	Waste	39
40	R-100	Water	40
41	R-100	Steam	41
42	R-100	Salicylic Acid	42
43	R-100	Waste	43
44	R-100	Water	44
45	R-100	Steam	45
46	R-100	Salicylic Acid	46

No	Equipment	Material	Flow
1	R-100	Phenol	1
2	R-100	Sodium Hydroxide	2
3	R-100	Carbon Dioxide	3
4	R-100	Water	4
5	R-100	Steam	5
6	R-100	Salicylic Acid	6
7	R-100	Waste	7
8	R-100	Water	8
9	R-100	Steam	9
10	R-100	Salicylic Acid	10
11	R-100	Waste	11
12	R-100	Water	12
13	R-100	Steam	13
14	R-100	Salicylic Acid	14
15	R-100	Waste	15
16	R-100	Water	16
17	R-100	Steam	17
18	R-100	Salicylic Acid	18
19	R-100	Waste	19
20	R-100	Water	20
21	R-100	Steam	21
22	R-100	Salicylic Acid	22
23	R-100	Waste	23
24	R-100	Water	24
25	R-100	Steam	25
26	R-100	Salicylic Acid	26
27	R-100	Waste	27
28	R-100	Water	28
29	R-100	Steam	29
30	R-100	Salicylic Acid	30
31	R-100	Waste	31
32	R-100	Water	32
33	R-100	Steam	33
34	R-100	Salicylic Acid	34
35	R-100	Waste	35
36	R-100	Water	36
37	R-100	Steam	37
38	R-100	Salicylic Acid	38
39	R-100	Waste	39
40	R-100	Water	40
41	R-100	Steam	41
42	R-100	Salicylic Acid	42
43	R-100	Waste	43
44	R-100	Water	44
45	R-100	Steam	45
46	R-100	Salicylic Acid	46

INSTITUT TEKNOLOGI SEPULUH NOPEMBER
ITS

FAKULTAS TEKNIK
SAHABAT
ITS

DEPARTEMEN TEKNIK KIMIA
ITS

LABORATORIUM TEKNOLOGI PROSES
ITS

SKRIPSI
ITS

DISUSUN OLEH
ITS

FAKULTAS TEKNIK
ITS

DEPARTEMEN TEKNIK KIMIA
ITS

LABORATORIUM TEKNOLOGI PROSES
ITS

SKRIPSI
ITS