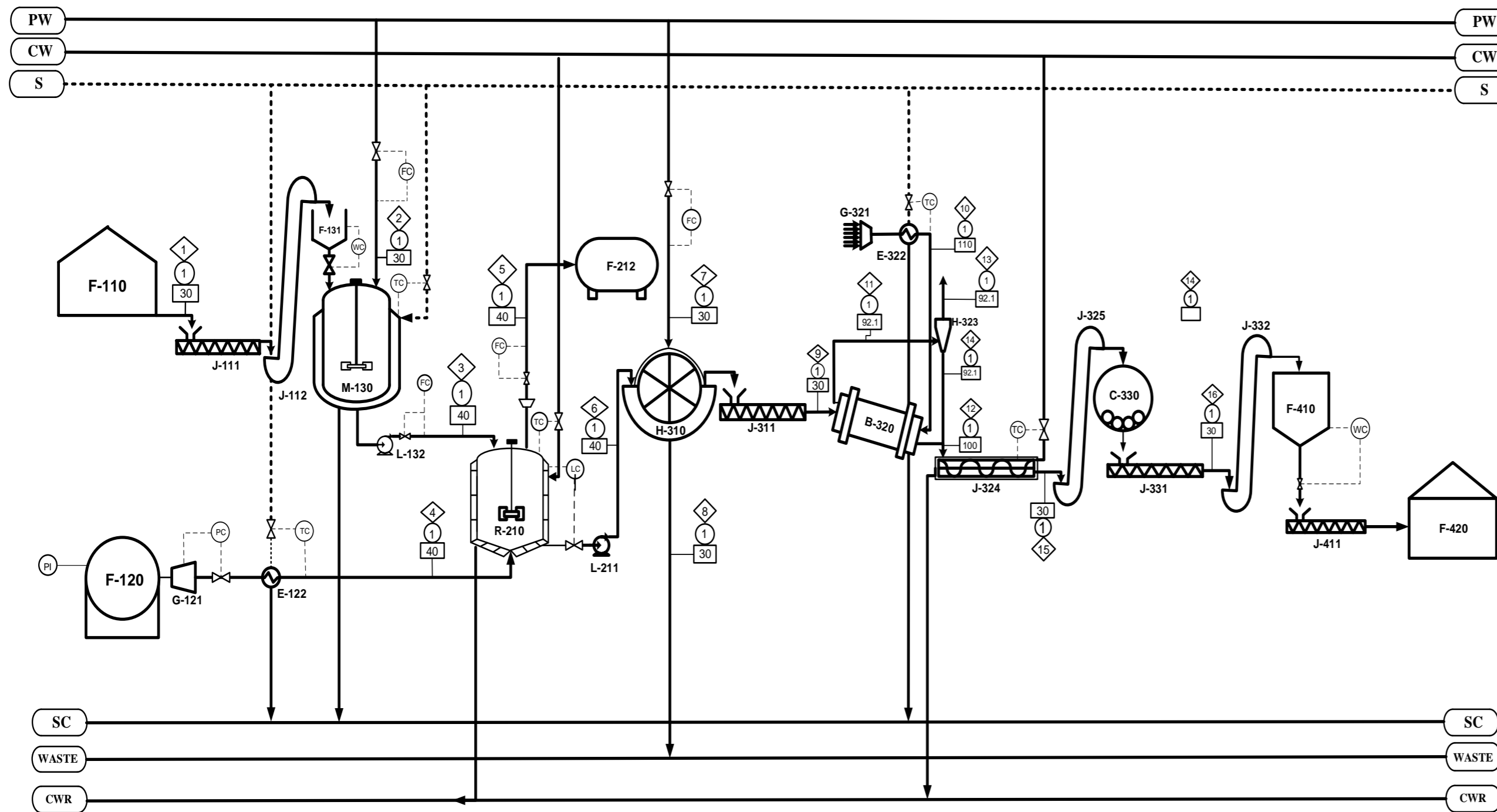


# PABRIK BARIUM KARBONAT DARI BARIUM SULFIDE DAN KARBON DIOKSIDA (CO<sub>2</sub>)



**KETERANGAN :**

	: Temperatur
	: Aliran Massa ; Kg/jam
	: Weight Control
	: Pressure Control
	: Temperatur Control
	: Flow Control
	: Pressure Indicator
	: Level Control
	: Proses Water
	: Steam
	: Cooling Water
	: Steam Condensat
	: Cooling Water Return
	: Waste water Treatment

NO.	KODE ALAT	NAMA ALAT
1	F-110	STORAGE BARIUM SULFIDE
2	F-120	STORAGE KARBONDIOKSIDA
3	G-121	EXPANDER
4	E-122	HEATER CO <sub>2</sub>
5	J-111	SCREW CONVEYOR
6	J-112	BUCKET ELEVATOR
7	F-131	HOPPER
8	M-130	MIXING TANK
9	L-132	POMPA
10	R-210	REAKTOR
11	L-211	POMPA REAKTOR
12	G-321	BLOWER
13	F-212	GAS HOLDER
14	H-310	ROTARY DRUM VACUUM FILTER
15	J-311	SCREW CONVEYOR
16	B-320	ROTARY DRYER
17	E-322	HEATER UDARA
18	H-323	CYCLONE
19	J-324	COOLING CONVEYOR
20	J-325	BUCKET ELEVATOR
21	C-330	BALL MILL
22	J-331	SCREW CONVEYOR
23	J-332	BUCKET ELEVATOR
24	F-410	SILO BARIUM KARBONAT
25	J-411	SCREW CONVEYOR
26	F-420	STORAGE BARIUM KARBONAT

FLWSHEET PRA RANCANGAN PABRIK BARIUM KARBONAT DARI BARIUM SULFIDA DAN KARBONDIOKSIDA

OLEH : EVI LUTFIAH  
NPM : 18031010025

DOSEN PEMBIMBING

Ir. MU'TASIM BILLAH, MS  
PROGRAM STUDI TEKNIK KIMIA  
FAKULTAS TEKNIK  
UNIVERSITAS PEMBANGUNAN NASIONAL "VETERAN"  
JAWA TIMUR  
2022

Komponen	Aliran Massa (Kg/Jam)															
	1	2	3	4	5	6	7	8	9	10	11	12	13	14	15	16
BaS	6636,31	-	6636,31	-	-	132,726	-	131,693	1,03335	-	0,01033	1,02301	0,01023	1,03324	0,05166	1,08491
CO <sub>2</sub>	-	-	-	1723,51	34,4703	-	-	-	-	-	-	-	-	-	-	-
H <sub>2</sub> O	-	44568,9	44568,9	17,4092	-	43895,4	10334,3	53888	341,749	-	296,473	45,2762	-	45,2762	2,26381	47,54
BaCO <sub>3</sub>	-	-	-	-	-	7576,52	-	-	7576,52	-	75,7652	7500,75	75,0075	7575,76	384,455	7954,55
H <sub>2</sub> S	-	-	-	-	1305,17	-	-	-	-	-	-	-	-	-	-	-
C	67,0335	-	67,0335	-	-	67,0335	-	-	67,0335	-	0,67033	66,3631	0,66363	67,0268	3,35134	70,3781
Udara	-	-	-	-	-	-	-	-	-	15578,5	15578,5	-	-	-	-	-
<b>Total</b>	<b>6703,35</b>	<b>44568,9</b>	<b>51272,3</b>	<b>1740,92</b>	<b>1339,64</b>	<b>51671,6</b>	<b>10334,3</b>	<b>54019,6</b>	<b>7986,33</b>	<b>15578,5</b>	<b>15951,4</b>	<b>7613,41</b>	<b>75,6814</b>	<b>7689,09</b>	<b>390,121</b>	<b>8073,55</b>