



Alamat: Jl. Toll BMS JIPE, Manyarejo
(7.03.28.1.5.1.2.38.31.316.1)
Luas Area: 26.066 m²
CSB: 3 meter (jalan), menyesuaikan
Taman
KDB: 60% (maks. 15.640 m²)
KLB: 1.8.30m (maks. 28.152 m²)
KB: 15 meter
RTH: 20% (min. 5.213 m²)

JIPE CRUISE TERMINAL

Java Integrated Industrial Port and Estate (JIPE) Kalimantan merupakan upaya pemerintah Gresik dalam mengembangkan kawasan Industri Gresik sejak tahun 2016 berdasarkan Rencana Pembangunan Jangka Menengah Daerah (RPJMD) tahun 2016-2021 kabupaten Gresik. Lokasi dari JIPE berada kurang lebih 20 km dari akses tol road menuju ke Surabaya. JIPE sendiri berada di area waterfront pantai utara Gresik.



Drop - Off



Apron



Courtyard

FACT

Pengembangan *Java Integrated Industrial Port and Estate (JIPE) Kalimantan* Manyar sebagai kawasan Pelabuhan Internasional di Gresik **belum memiliki** fasilitas Terminal Penumpang dalam kawasanannya.

GOALS

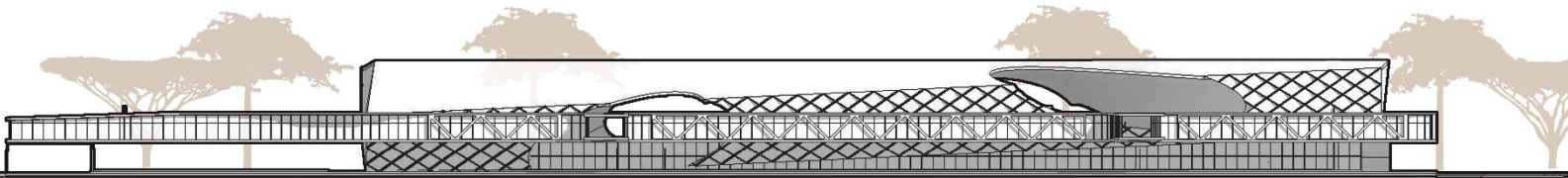
Merancang *Cruise Terminal hemat energi* sebagai rolemodel *Industrial Port and Estate di Indonesia*.

CONCEPT

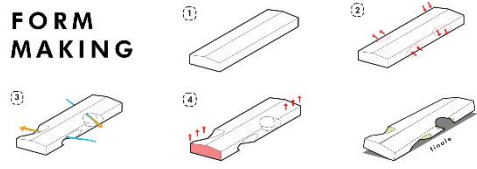


Penerapan *Passive Design* sebagai solusi terhadap kawasan tropis juga peningkatan *building performance* dari perancangan *Cruise Terminal*.

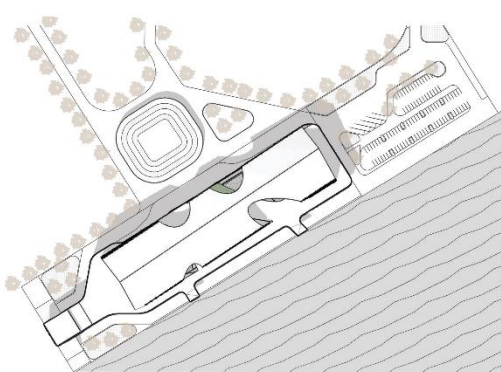
ELEVATION



FORM MAKING

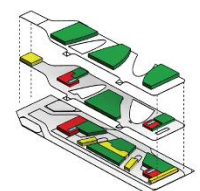


BLOCK PLAN

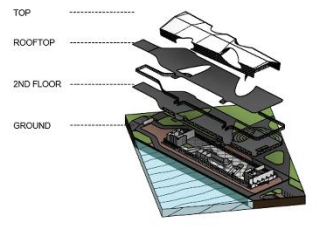


ABSTRACT DIAGRAM

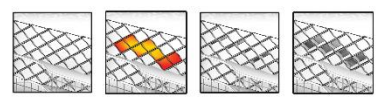
- PUBLIC
- OFFICIAL
- MECH. & ELEC
- SERVICE

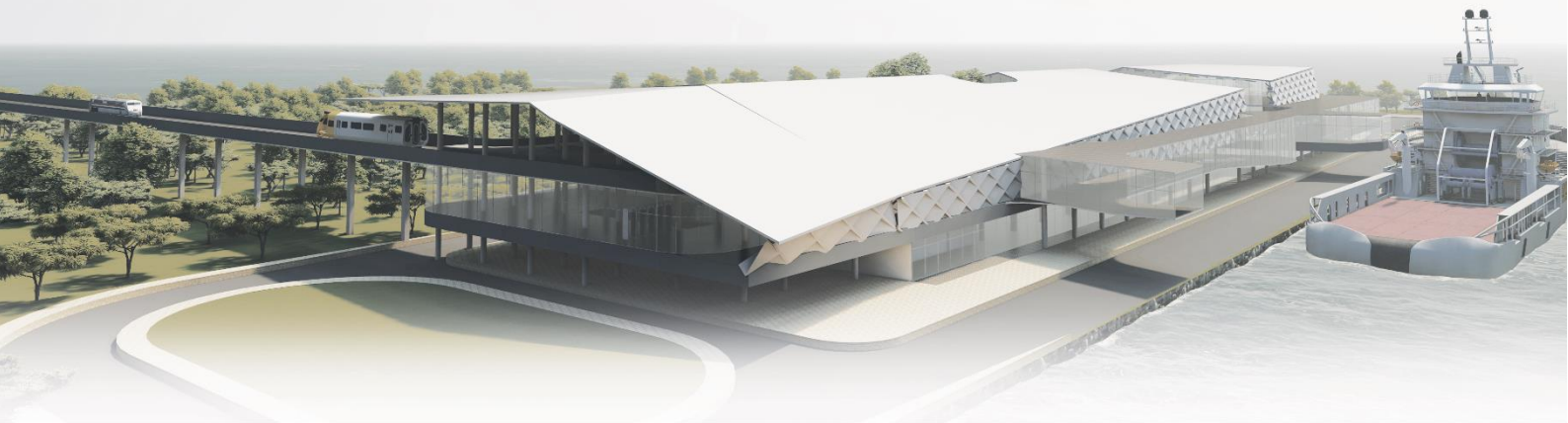


EXPLODED AXONOMETRIC

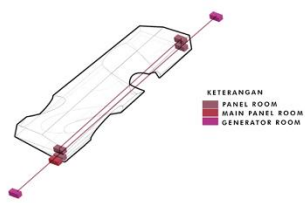


ADAPTIVE SHADING

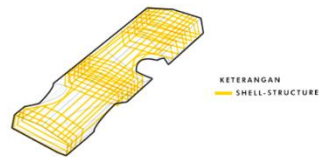




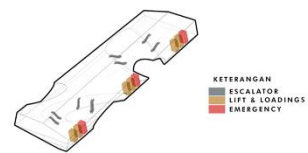
UTILITIES



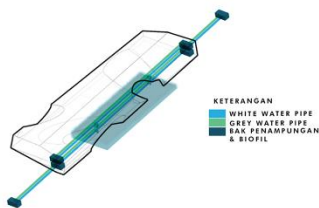
ELECTRICAL



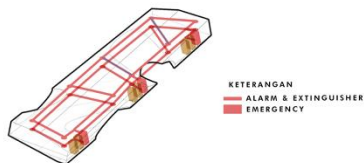
STRUCTURE



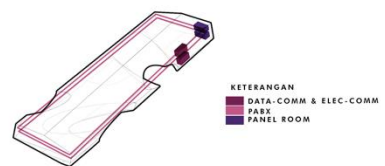
TRANSPORTATION



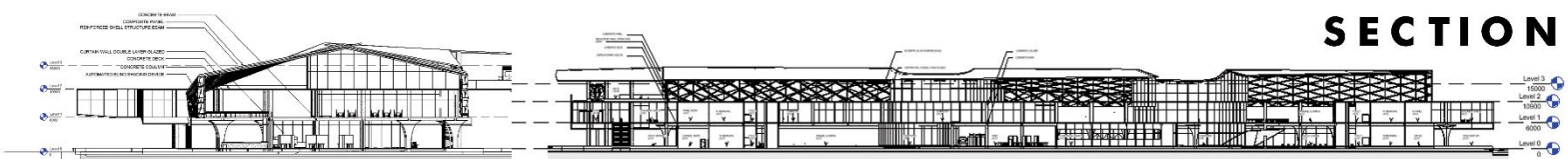
PLUMBING & DRAINAGE



FIREFIGHTING



TELE-COMM



CORRIDOR



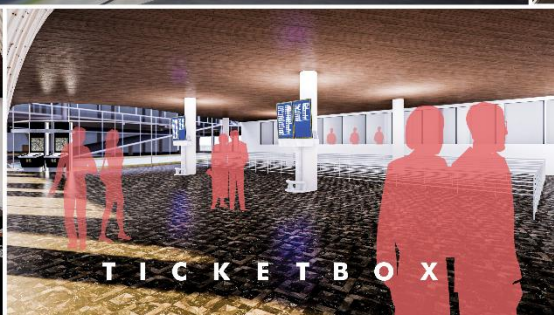
COURTYARD



V.I.P



FOODCOURT



TICKETBOX



PUBLIC LOUNGE

4. FOTO MAKET



TAMPAK ATAS



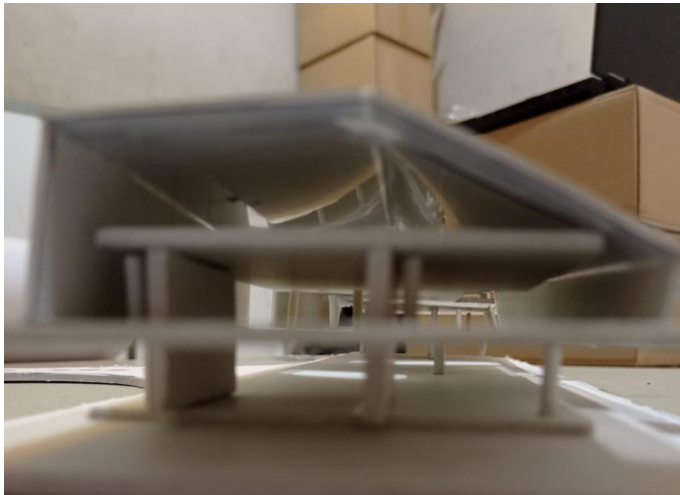
TAMPAK BELAKANG



TAMPAK SAMPING



TAMPAK KANAN



TAMPAK KIRI