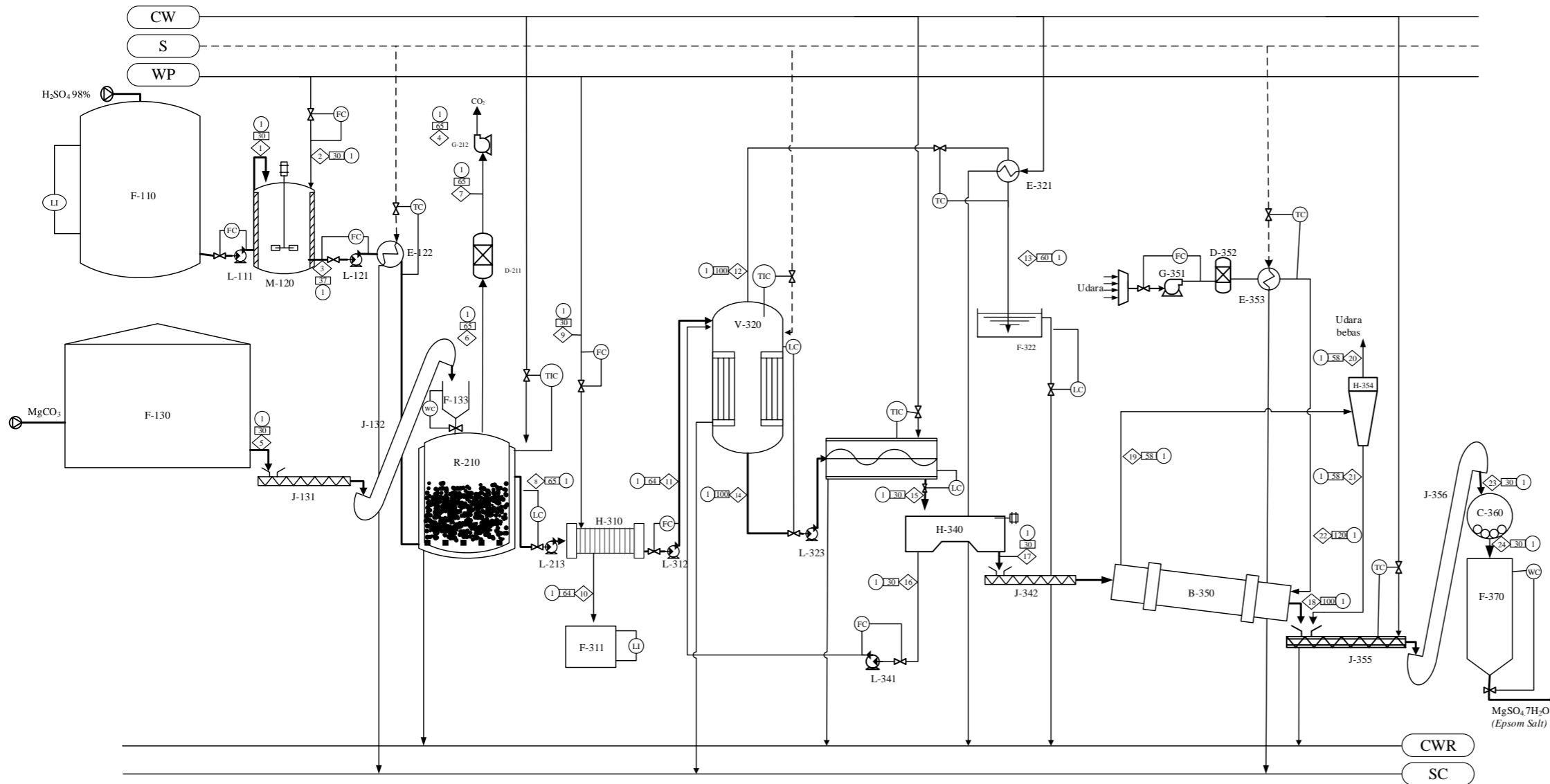


PABRIK EPSOM SALT DARI MAGNESITE DAN SULFURIC ACID DENGAN PROSES NETRALISASI



KOMPONEN	Aliran Massa (kg/jam)																								
	1	2	3	4	5	6	7	8	9	10	11	12	13	14	15	16	17	18	19	20	21	22	23	24	
H ₂ SO ₄	5101,5473		5101,5473	5101,5473				102,0309			102,0309			198,9603	198,9603	189,0123	9,9480	9,8485	0,0995		0,0995		9,9480	9,9480	
H ₂ O	104,1132	11799,4971	11903,6104	11903,6104			12821,6496	571,7974	11,4359	13382,0111	8110,90704	8110,9070	7443,3775	2235,0583	2123,3054	111,7529	11,3505	100,4024	100,4024				11,3505	11,3505	
MgCO ₃					4385,3125			87,7063		87,7063															
SiO ₂					44,2961			44,2961		44,2961															
CO ₂						2242,8499	6,7285																		
MgSO ₄								6136,2335			6136,2335			6252,8219	125,0564	118,8036	6,2528	6,1903	0,0625		0,0625		6,2528	6,2528	
MgSO ₄ ·7H ₂ O															11336,0846		11336,0846	11222,7238	113,3608		113,3608		11336,0846	11336,0846	
Udara																				19008,5848	19008,5848		19008,5848		
TOTAL	5205,6605	11799,4971	17005,1576	17005,1576	4429,6086	2242,8499	6,7285	19191,9163	571,7974	143,4383	19620,2755	8110,9070	8110,9070	13895,1598	13895,1598	2431,1214	11464,0384	11250,1131	19222,5101	19108,9872	113,5229	19008,5848	11363,6360	11363,6360	

KETERANGAN			
CW	COOLING WATER	◇	ALIRAN MASSA; kg/jam
CWR	COOLING WATER RETURN	□	TEMPERATUR ; °C
S	STEAM CONDENSATE RETURN	○	TEKANAN; atm
SCR	STEAM	⊗	BAHAN BAKU
PW	PROCESS WATER	⊙	PRODUK

No	KODE ALAT	NAMA ALAT
1	F-110	TANGKI PENAMPUNG SULFURIC ACID
2	L-111	POMPA - 1
3	M-120	TANGKI PENGECERAN SULFURIC ACID
4	L-121	POMPA - 2
5	E-122	HEATER -1 SULFURIC ACID
6	F-130	GUDANG PENYIMPANAN MAGNESITE
7	J-131	SCREW CONVEYOR - 1
8	J-132	BUCKET ELEVATOR - 1
9	F-133	HOPPER MAGNESITE
10	R-210	REAKTOR
11	G-211	BLOWER - 1
12	D-212	MOLECULAR SIEVE - 1
13	L-213	POMPA - 3
14	H-310	FILTER PRESS
15	F-311	PENAMPUNG CAKE
16	L-312	POMPA - 4
17	V-320	EVAPORATOR
18	E-321	CONDENSOR
19	F-322	HOT WELL
20	L-323	POMPA - 5
21	S-330	CRYSTALLIZER
22	H-340	CENTRIFUGE
23	L-341	POMPA - 6
24	J-342	SCREW CONVEYOR - 2
25	B-350	ROTARY DRYER
26	G-351	BLOWER - 2
27	D-352	MOLECULAR SIEVE - 2
28	E-353	HEATER - 2 UDARA
29	H-354	CYCLONE
30	J-355	COOLING SCREW CONVEYOR - 3
31	J-356	BUCKET ELEVATOR - 2
32	C-360	BALL MILL
33	F-370	SILO EPSOM SALT

NAMA : Elsyaff Visshilmi Kaffah
 NPM : 19031010105
 DOSEN PEMBIMBING : Ir. Suprihatin MT

FLOWSHEET PRA RENCANA PABRIK EPSOM SALT DARI MAGNESITE DAN SULFURIC ACID DENGAN PROSES NETRALISASI



PROGRAM STUDI TEKNIK KIMIA
 FAKULTAS TEKNIK
 UNIVERSITAS PEMBANGUNAN NASIONAL "VETERAN"
 JAWA TIMUR
 2023