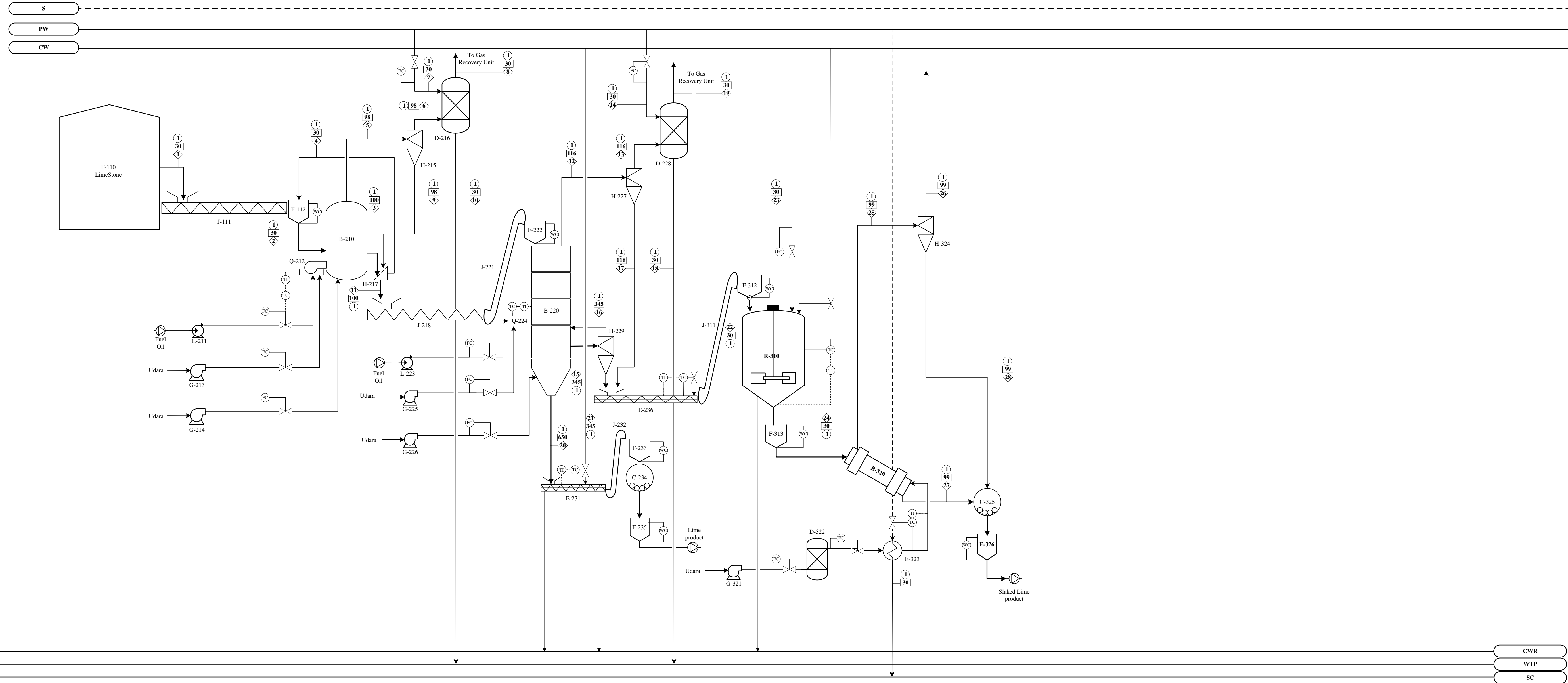


PABRIK LIME DAN SLAKED LIME DARI LIMESTONE DENGAN PROSES KALSINASI



KOMPONEN	LAJU ALIR																												
	1	2	3	4	5	6	7	8	9	10	11	12	13	14	15	16	17	18	19	20	21	22	23	24	25	26	27	28	
CaCO ₃	10003.4268	100.0343	0.1891	500.1213	10003.4268	1.0003			99.0339	1.0003	9502.3051	0.1891	0.00189		9.4073	0.0941	0.1872	0.00189		180.5438	9.3132	9.5004		9.5004	0.0950	0.0010	9.4054	0.0941	
MgCO ₃	50.7788	0.5078	0.0010	2.5387	50.7788	0.0051			0.5027	0.0051	48.2351	0.0010	0.00001		0.0478	0.0005	0.0010	0.00001		0.9165	0.0473	0.0482		0.0482	0.0005	0.0000	0.0477	0.0005	
Fe ₂ O ₃	2.0312	0.0203	0.0019	0.1015	2.0312	0.0002			0.0201	0.0002	1.9294	0.0019	0.00002		0.0955	0.0010	0.0019	0.00002		1.8329	0.0946	0.0965		0.0965	0.0010	0.0000	0.0955	0.0010	
CaO												5.1888	0.05189		258.1358	2.5814	5.1369	0.05189		4954.1218	255.5545	260.6914		26.0691	0.2607	0.0026	25.8084	0.2581	
MgO												0.0224	0.00022		1.1142	0.0111	0.0222	0.00022		21.3842	1.1031	1.1253		0.1125	0.0011	0.0000	0.1114	0.0011	
CO ₂													4122.1546	4122.1546															
Ca(OH) ₂																									310.0365	3.1004	0.0310	306.9362	3.0694
Mg(OH) ₂																									1.4685	0.0147	0.0001	1.4538	0.0145
Udara																									242.4939	242.4939	0.0000		
H ₂ O	99.5265	49.4980	94.0799	4.9516	99.5265	0.4950	0.2803	0.0990	49.0030	0.6763	94.0799	94.0799	94.0799	15.0636				90.3275	18.8160					91.0440	15.1740	14.8263	14.8263	0.3477	
TOTAL	10155.7632	150.0603	94.2719	507.7131	10155.7632	1.5006	0.2803	0.0990	148.5597	1.6819	9646.5495	4221.6377	4216.28859	15.0636	268.8006	2.6880	5.3491	90.3816	4140.9706	5158.7992	266.1126	271.4617	91.0440	604.9996	260.7935	14.8610	344.2061	3.4386	

KETERANGAN

	PW	PROCESS WATER		LAJU ALIR (KG/JAM)
	CW	COOLING WATER		TEMPERATURE (°C)
	CWR	COOLING WATER RETURN		TEKANAN (ATM)
	WTP	WASTE TREATMENT PROCESS		STEAM

No	Nama Alat	Kode Alat
1	GUDANG LIMESTONE	F-110
2	SCREW CONVEYOR - 1	J-111
3	HOPPER - 1	F-112
4	POMPA - 1	L-221
5	BLOWER - 1	G-213
6	BURNER - 1	Q-212
7	BLOWER - 2	G-214
8	FLUOSOLID DRYER	B-210
9	CYCLONE - 1	H-215
10	SCRUBBER - 1	D-216
11	VIBRATING SCREEN	H-217
12	SCREW CONVEYOR - 2	J-218
13	BUCKET ELEVATOR - 1	J-221
14	HOPPER - 2	F-222
15	POMPA - 2	L-223
16	BLOWER - 3	G-225
17	BURNER - 2	Q-224
18	BLOWER - 4	G-226
19	FLUIDIZED BED KILN	B-220
20	COOLING CONVEYOR - 1	E-231
21	BUCKET ELEVATOR - 2	J-232
22	HOPPER - 3	F-233
23	BALL MILL - 1	C-234
24	HOPPER - 4	F-235
25	CYCLONE - 2	H-227
26	SCRUBBER - 2	D-228
27	CYCLONE - 3	H-229
28	COOLING CONVEYOR - 2	E-236
29	BUCKET ELEVATOR - 3	J-311
30	HOPPER - 5	E-312
31	HYDRATOR	R-310
32	HOPPER - 6	F-313
33	BLOWER - 5	G-321
34	MOLECULAR SIEVE	D-322
35	HEATER	E-323
36	ROTARY DRYER	B-320
37	CYCLONE - 4	H-324
38	BALL MILL - 2	C-325
39	HOPPER - 7	F-326

Digambar Oleh

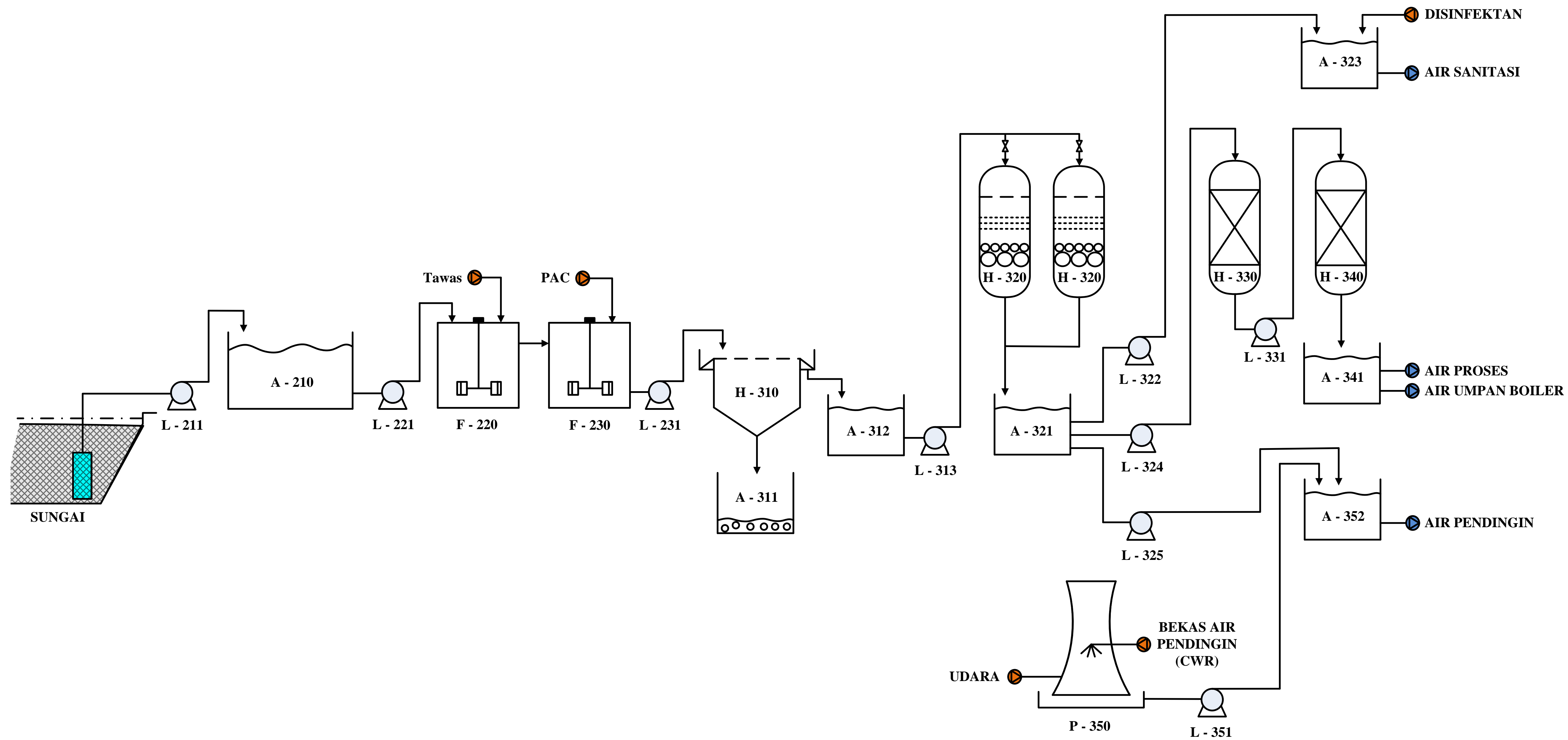
DEWA MADE ADIT PRASETIA	18031010180
DOSEN PEMBIMBING	Ttd,
DR. IR. NOVEL KARAMAN, MT	

FLOWSHEET PRA RENCANA PABRIK LIME & SLAKED LIME DARI LIMESTONE DENGAN PROSES KALSINASI

PROGRAM STUDI TEKNIK KIMIA
FAKULTAS TEKNIK
UNIVERSITAS PEMBANGUNAN NASIONAL "VETERAN" JAWA TIMUR
2023



FLWSHEET UTILITAS UNIT PENGOLAHAN AIR



23	A - 352	BAK PENAMPUNG AIR PENDINGIN
22	L - 351	POMPA - 9
21	P - 350	COOLING TOWER
20	A - 341	BAK PENAMPUNG AIR DEMINERALISASI
19	H - 340	ANION EXCHANGER
18	L - 331	POMPA - 8
17	H - 330	KATION EXCHANGER
16	L - 325	POMPA - 7
15	L - 324	POMPA - 6
14	A - 323	BAK PENAMPUNG AIR SANITASI
13	L - 322	POMPA - 5
12	A - 321	BAK PENAMPUNG AIR BERSIH
11	H - 320	SAND FILTER
10	L - 313	POMPA - 4
09	A - 312	BAK PENAMPUNG AIR JERNIH
08	A - 311	BAK PENAMPUNG FLOK
07	H - 310	CLARIFIER
06	L - 231	POMPA - 3
05	F - 230	TANGKI FLOKULASI
04	F - 220	TANGKI KOAGULASI
03	L - 221	POMPA - 2
02	A - 210	BAK PENAMPUNG AIR SUNGAI
01	L - 211	POMPA - 1

NO	KODE	NAMA ALAT
DEWA MADE ADIT PRASETIA 18031010180		TTD
DOSEN PEMBIMBING DR. IR. NOVEL KARAMAN, MT.		

**FLWSHEET UTILITAS
UNIT PENGOLAHAN AIR**

**PROGRAM STUDI TEKNIK KIMIA
FAKULTAS TEKNIK
UNIVERSITAS PEMBANGUNAN NASIONAL "VETERAN"
JAWA TIMUR
2021**