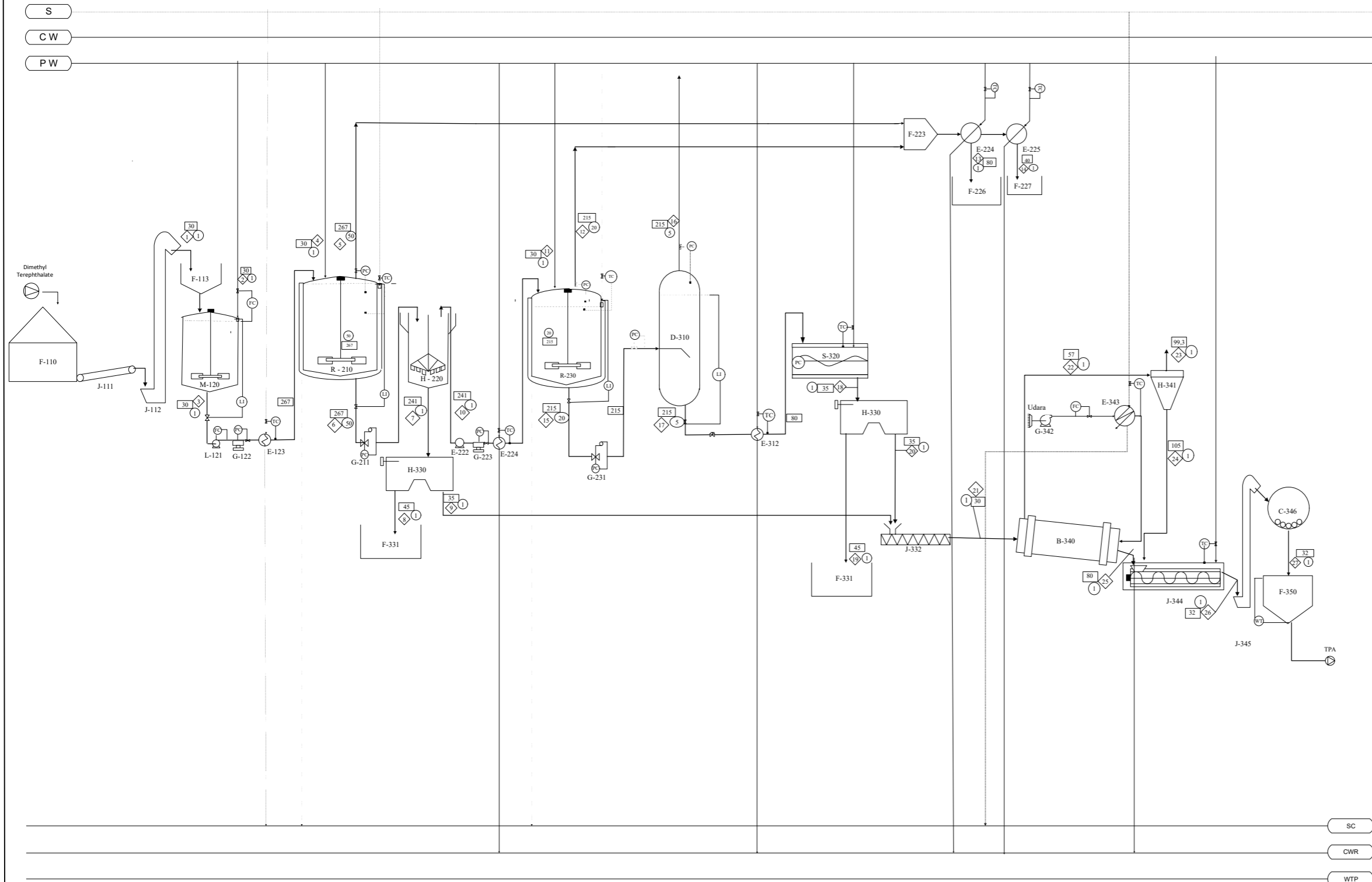


PABRIK TEREPHTHALIC ACID DARI DIMETHYL TEREPHTHALATE DENGAN PROSES HYDROLYSIS



KETERANGAN :

 	Temperatur ; °C
◇	Aliran Massa ; kg/jam
○	Tekanan ; atm
S	Steam : 148°C ; 4,5 atm
S C	Steam Condensate
C W	Cooling Water
C W R	Cooling Water Return
P W	Process Water
W T P	Waste Treatment Plant

39	F-227	STORAGE TANK METHANOL
38	F-226	STORAGE TANK H ₂ O
37	E-225	CONDENSOR METHANOL
36	E-224	CONDENSOR H ₂ O
35	F-223	TANGKI PENAMPUNG UAP
34	F-350	CYLO TEREPHTHALIC ACID
33	J-349	BELT CONVEYOR
32	J-348	BUCKET ELEVATOR - 3
31	H-347	SCREEN
30	C-346	BALLMILL
29	J-345	BUCKET ELEVATOR - 2
28	J-344	COOLING CONVEYOR
27	E-343	HEATER-2 (HEATER UDARA)
26	G-342	BLOWER
25	H-341	CYCLONE
24	B-340	ROTARY DYER
23	J-332	SCREW CONVEYOR
22	F-331	BAK PENAMPUNG MOTHER LIQUOR
21	H-330	CENTRIFUGE
20	S-320	CRYSTALLIZER
19	E-312	COOLER-3
18	D-310	FLASHDRUM
17	R-230	HYDROLIZER-2
16	E-224	COOLER-2
15	G-223	COMPRESSOR
14	L-222	POMPA LARUTAN MONOMETHYL TEREPHTHALATE
13	E-221	COOLER-1
12	H-220	THICKENER
11	G-211	EXPANSION VALVE
10	R-210	HYDROLIZER-1
9	L-124	POMPA WATER PROCESS
8	E-123	HEATER-1
7	G-122	COMPRESSOR
6	L-121	POMPA LARUTAN DIMETHYL TEREPHTHALATE
5	M-120	TANGKI PELARUT
4	F-113	CYLO DIMETHYL TEREPHTHALATE
3	J-112	BUCKET ELEVATOR -1
2	J-111	BELT CONVEYOR - 1
1	F-110	STOCK DIMETHYL TEREPHTHALATE

Aliran Massa (Kg / iam)

	1	2	3	4	5	6	7	8	9	10	11	12	13	14	15	16	17	18	19	20	21	22	23	24	25	26	27	
C ₁₀ H ₁₀ O ₄	82.599.7832		82.599.7832																									
C ₈ H ₆ O ₄	1.018.7024		1.018.7024			77.657.6765	3.602.6548	3.422.5220	180.1327	74.055.0217																		
C ₁₀ H ₈ O ₂	84.8919		84.8919			84.8919	3.9383	3.7413	0.1969	80.9536					80.9536	80.9536	80.9536	76.9059	4.0477	3.570.6354	36.0670	0.3607	35.7064	3.570.6354	3.606.3418	3.606.3418		
C ₈ H ₆ O ₂	594.2430		594.2430			594.2430	27.5678	26.1894	1.3784	566.6752					566.6752	566.6752	566.6752	538.3415	28.3338	55.3426	0.5590	0.0056	0.5534	55.3426	55.8960	55.8960		
C ₈ H ₈ O ₂	594.2430		594.2430			594.2430	27.5678	26.1894	1.3784	566.6752					566.6752													
C ₈ H ₆ O ₄															68.295.1867	60.121.6300	0.9583	0.9104				690.7320	6.9073					
CH ₃ OH						13.624.7065						13.165.3372	178.6903	26.611.4434														
H ₂ O		227.150.5244	227.150.5244	21.748.1774	21.748.1774	210.534.1470	9.766.9913	9.278.6418	488.3496	200.767.1557	54.179.9353	54.179.9353	75.923.0508	5.0619	193.361.6535	183.693.5709	10.234.7579	95.828.4701	6.519.1090	36.3861	16.249.7142	16.249.7142		36.3861	36.3861	36.3861		
C ₁₀ H ₈ O ₁₀						8.952.4800	8.952.4800		8.952.4800									60.120.6717		68.382.4677			683.8247	68.382.4677	69.066.2923	69.066.2923		
UDARA															6.519.1090				1.983.340.5393	1.983.340.5393	1.983.340.5393	1.983.340.5393		683.8247	68.382.4677	69.066.2923	69.066.2923	
TOTAL	84.891.8635	227.150.5244	312.042.3880	21.748.1774	35.372.8839	298.417.6815	22.381.2000	12.757.2840	9.623.9160	276.036.4815	54.179.9353	67.345.2725	76.101.6511	26.616.5053	262.871.1443	184.260.2461	71.004.0168	163.116.8379	616.1578	66.672.2101	2.053.385.3710	2.000.317.6115	1.999.597.5271	720.0845	72.044.8318	72.764.9162	72.764.9162	

DIGAMBAR OLEH : SHINTA BUDI PRATIWI
NPM : 17031010029
DOSEN PEMBIMBING : Ir. SANI, MT
FLWSHEET PABRIK TEREPHTHALIC ACID DARI DIMETHYL TEREPHTHALATE DENGAN PROSES HYDROLYSIS
PROGRAM STUDI TEKNIK KIMIA
FAKULTAS TEKNIK
UNIVERSITAS PEMBANGUNAN NASIONAL "VETERAN"
JAWA TIMUR
2022