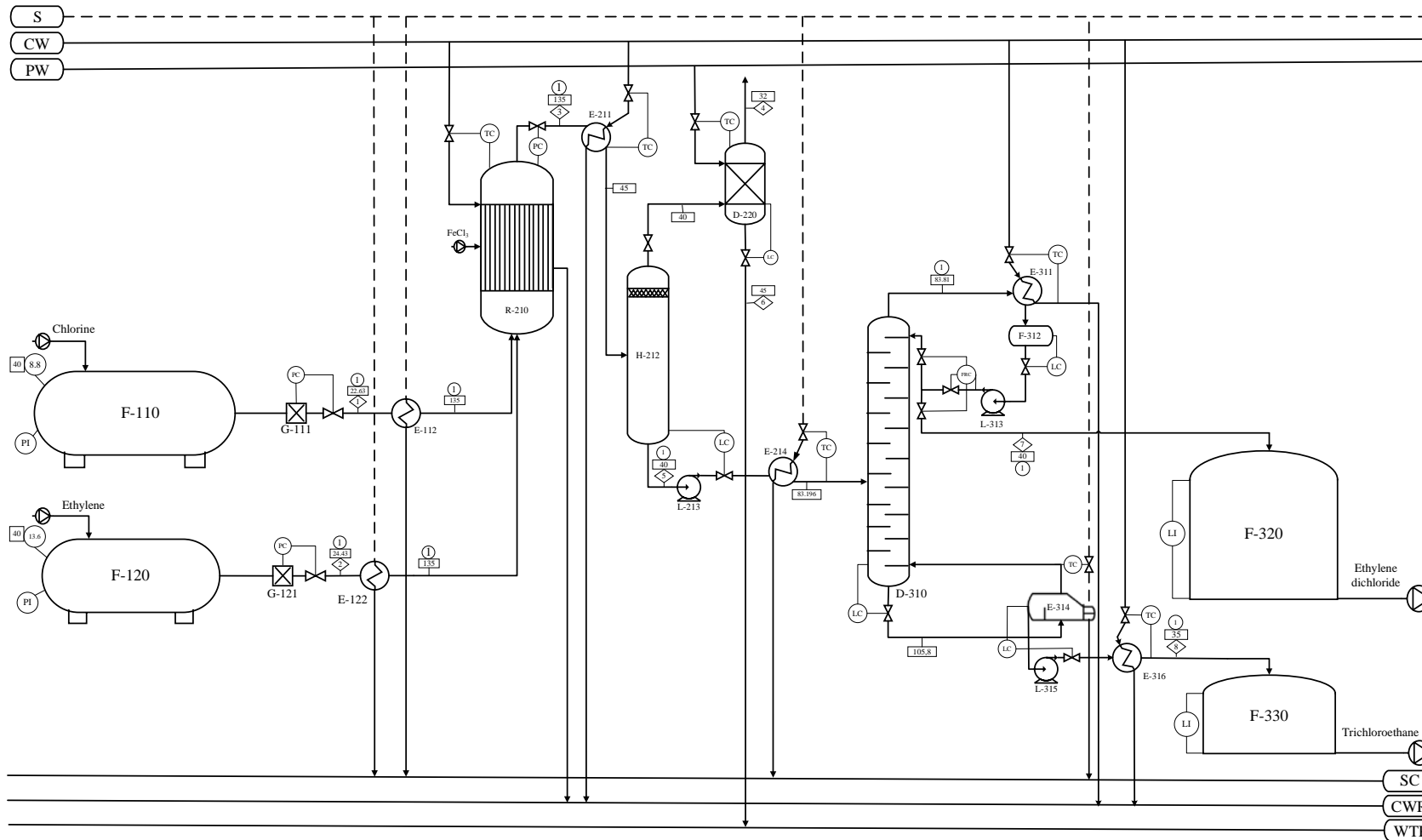


PABRIK ETHYLENE DICHLORIDE DARI GAS ETHYLENE DAN CHLORINE DENGAN DIRECT CHLORINATION PROCESS



Keterangan	
	Temperatur; °C
	Airan Massa; kg/jam
	Tekanan; atm
S	Steam 148 °C
PW	Process Water
SC	Steam Condensate
CW	Cooling Water
CWR	Cooling Water Return
WTP	Waste Water Treatment Plant

21	F-330	Tangki Trichloroethane
20	F-320	Tangki Ethylene Dichloride
19	E-316	Cooler
18	L-315	Pompa-3
17	E-314	Reboiler
16	L-313	Pompa-2
15	F-312	Akumulator
14	E-311	Condensor-2
13	D-310	Kolom Distilasi
12	E-214	Heater
11	D-220	Scrubber
10	L-213	Pompa-1
9	H-212	Separator
8	E-211	Condensor-1
7	R-210	Reaktor
6	E-122	Ethylene Pre-Heater
5	G-121	Expansion Ethylene
4	F-120	Tangki Ethylene
3	E-112	Chlorine Pre-Heater
2	G-111	Expansion Chlorine
1	F-110	Tangki Chlorine
No	Kode	Nama Alat

Komponen	Aliran Massa (Kg/Jam)							
	1	2	3	4	5	6	7	8
Cl ₂	4968,1753							
O ₂	14,9494		14,9494	14,9493741				
C ₂ H ₄		1890,3137	9,40454598	9,40454598				
CH ₄		0,2836	0,28363215	0,28363215				
C ₂ H ₆		0,2836	0,28363215	0,28363215				
C ₂ H ₄ Cl ₂			6373,25929		6373,2593		6309,52669	63,7325929
C ₂ H ₃ Cl ₃			373,662764		373,6628		3,73662764	369,926137
HCl			102,162479	1,0216		101,1409		
H ₂ O						159,7802		
TOTAL	4983,125	1890,881	6874,006	25,943	6746,922	260,921	6313,263	433,659

Digambar Oleh Tathmainnul Qulub Al Asrori
 NPM 18031010134
 Dosen Pembimbing : Ir. Siswanto, MS

FLOWSHEET PABRIK ETHYLENE
 DICHLORIDE DARI GAS ETHYLENE DAN
 CHLORINE DENGAN DIRECT CHLORINATION
 PROCESS



PROGRAM STUDI TEKNIK
 KIMIA
 FAKULTAS TEKNIK
 UNIVERSITAS
 PEMBANGUNAN NASIONAL
 "VETERAN" JAWA TIMUR
 2022