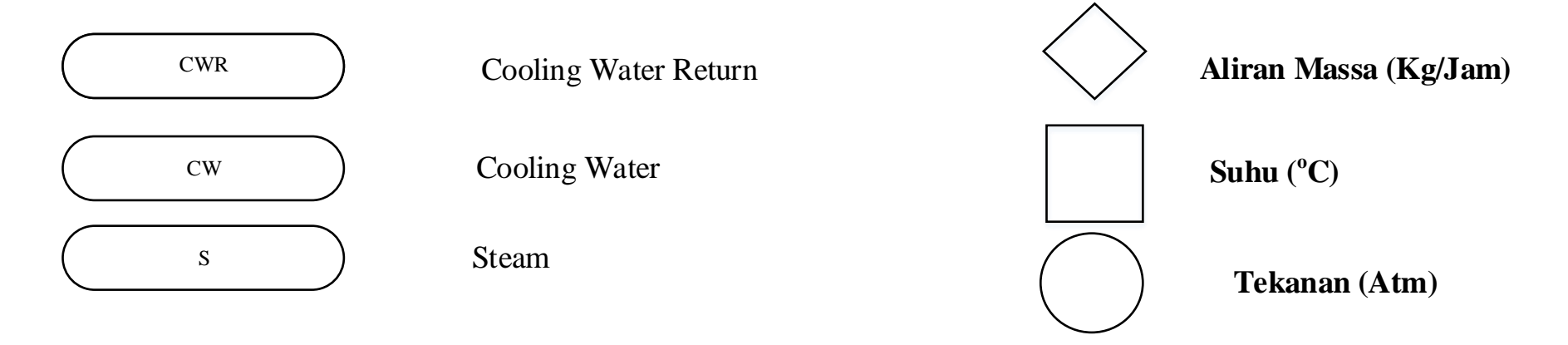
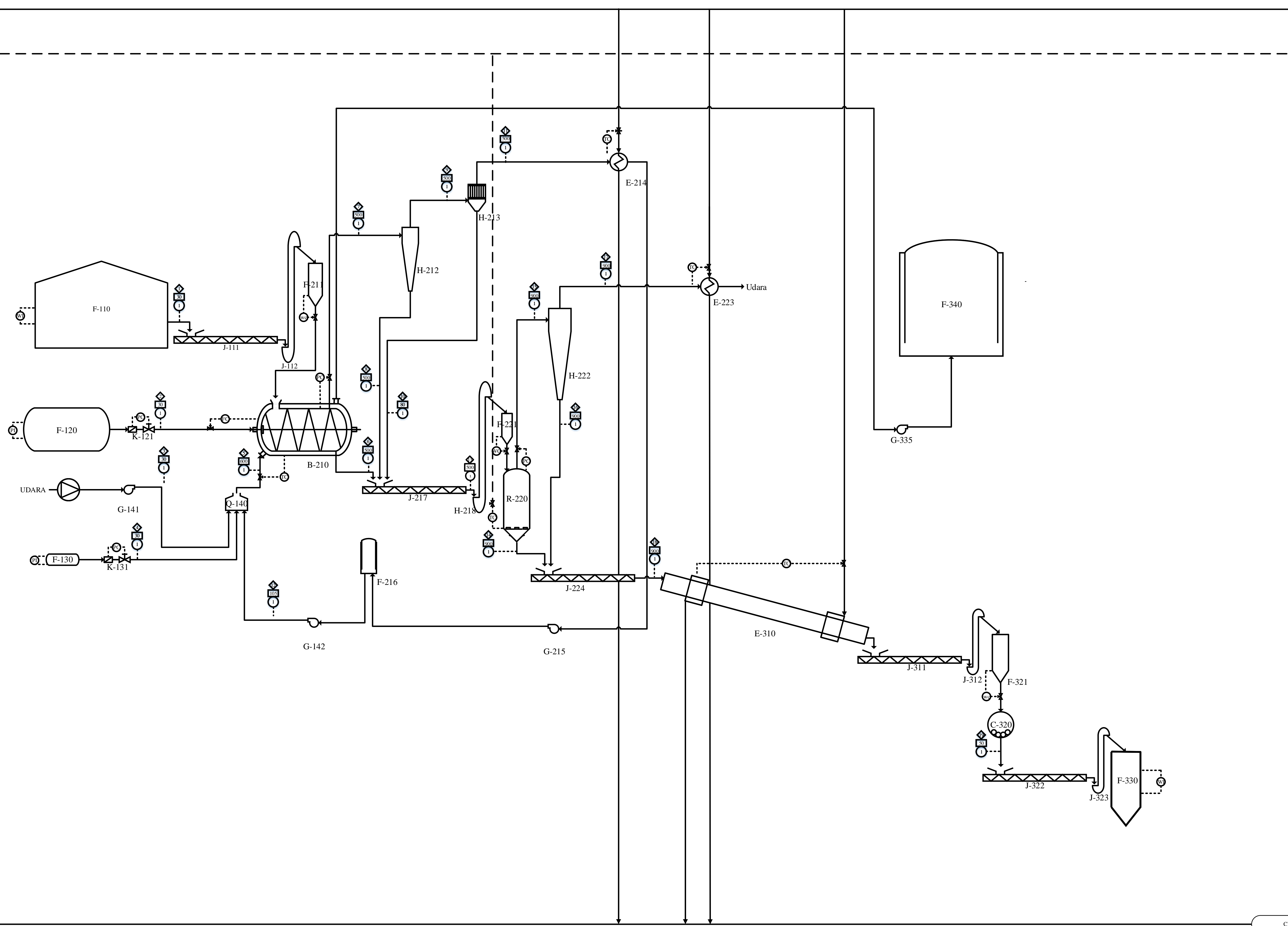


# PABRIK KARBON AKTIF DARI PALM KERNEL SHELL DENGAN METODE THERMAL ACTIVATION

SKALA 1:200



NO	KODE ALAT	NAMA ALAT
1	F-110	GUDANG PALM KERNEL SHELL
2	J-111	SCREW CONVEYER-1
3	J-112	BUCKET ELEVATOR-1
4	F-120	TANGKI NITROGEN
5	K-121	EXPANDER VALVE-1
6	F-130	TANGKI GAS ALAM
7	K-131	EXPANDER VALVE-2
8	Q-140	BURNER
9	G-141	BLOWER-1
10	G-142	BLOWER-2
11	B-210	REAKTOR PIROLISIS
12	F-211	HOPPER-1
13	H-212	CYCLONE-1
14	H-213	BAG FILTER
15	E-214	HEAT EXCHANGER-1
16	G-215	BLOWER-3
17	F-216	GAS HOLDER-1
18	J-217	SCREW CONVEYER-2
19	J-218	BUCKET ELEVATOR-2
20	R-220	REAKTOR AKTIVASI
21	F-221	HOPPER-2
22	H-222	CYCLONE-2
23	E-223	HEAT EXCHANGER-2
24	J-224	SCREW CONVEYER-3
25	E-310	ROTARY COOLER-1
26	J-311	SCREW CONVEYER-4
27	J-312	BUCKET ELEVATOR-3
28	F-321	HOPPER-3
29	C-320	BALL MILL
30	J-322	SCREW CONVEYER-5
31	J-323	BUCKET ELEVATOR-4
32	F-330	GUDANG KARBON AKTIF
33	G-341	BLOWER-4
34	F-340	GAS HOLDER-2

Digambar Oleh :   
 Reza Adrian Santoso      18031010098  
 Dosen Pembimbing : Ir. Nurul Widji Triana, MT

FLWSHEET PABRIK PABRIK KARBON AKTIF DARI PALM KERNEL DENGAN PROSES THERMAL ACTIVATION KAPASITAS 30.000 TON/ TAHUN

PROGRAM STUDI TEKNIK KIMIA  
 FAKULTAS TEKNIK  
 UNIVERSITAS PEMBANGUNAN NASIONAL "VETERAN" JAWA TIMUR  
 2022

Komponen	Aliran (kg/jam)																		
	1	2	3	4	5	6	7	8	9	10	11	12	13	14	15	16	17	18	19
CumH <sub>2</sub> O <sub>gas</sub>	9660.7090																		
H <sub>2</sub> O	856.3215				5514.8107	685.0572	1691.5839		1691.5839		1691.5839	1691.5839	685.0572	350.8359	6742.4125		6742.4125	350.8359	350.8359
Air	107.3058					302.3242	3.0538		3.0232		0.0305		0.0305						
N <sub>2</sub>	0.1904	966.0709	26960.9537		27927.2149		966.0709				966.0709		966.0709						
C						3725.7369	37.6337		37.2574		0.3763		0.3763						
C <sub>2</sub> H <sub>6</sub> O							1834.4503				1834.4503		1834.4503						
H <sub>2</sub>							95.9565				95.9565		95.9565						
CO							531.6150				531.6150		531.6150						
CO <sub>2</sub>					1.1660		7192.6597				1388.8551		1388.8551						
CH <sub>4</sub>					5.6928						327.9909		327.9909						
O <sub>2</sub>			8190.669464		1365.1116														
C <sub>2</sub> H <sub>6</sub>				1.3860															
C <sub>2</sub> H <sub>4</sub>				1.9184															
n-C <sub>4</sub> H <sub>10</sub>				0.5220															
i-C <sub>4</sub> H <sub>10</sub>				0.3836															
n-C <sub>3</sub> H <sub>8</sub>				0.1152															
i-C <sub>3</sub> H <sub>8</sub>				0.1435															
C <sub>2</sub> H <sub>4</sub>				0.1333															
Udara																			
Total	10624.5267	966.0709	35151.6231	11.4608	41999.7969	4713.1182	6877.2101	40.281	6836.9295	0.4069	6836.5226	6836.5226	4753.8057	4378.8969	6783.0999	40.2806	6742.8193	4419.1775	4419.1775