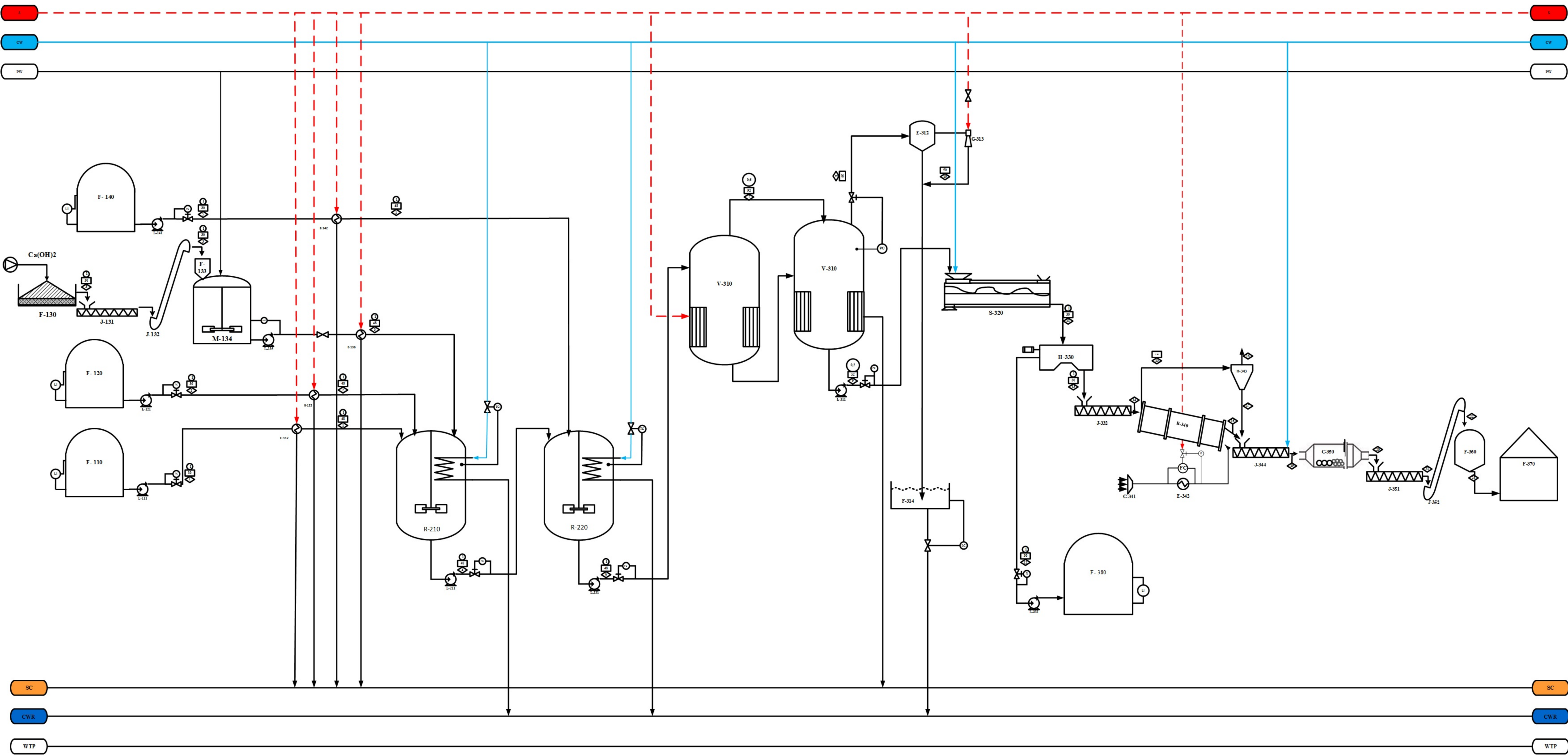


FLWSHEET PABRIK PENTAERITRITOL DARI FORMALDEHIDA, ASETALDEHIDA DAN KALSIVM HIDROKSIDA SEBAGAI MEDIA ALKALI



KETERANGAN	
	Temperatur, (°C)
	Aliran Massa, kg/jam
	Tekanan, atm
	Steam
	Steam Condensate
	Cooling Water
	Cooling Water Return
	Process Water
	Process Water Return

NO	KODE ALAT	NAMA ALAT
40	F-380	Tangki Penyimpanan Kalsium Format
39	F-370	Gudang Penyimpanan Pentaerythritol
38	F-360	Silo Penyimpanan Pentaerythritol
37	J-347	Bucket Elevator-2
36	J-351	Screw Conveyor-3
35	C-350	Ball Mill
34	J-344	Cooling Conveyor
33	H-343	Cyclone
32	E-342	Heater Udara
31	G-341	Blower
30	B-340	Rotary Dryer
29	J-332	Pompa-8
28	J-331	Screw Conveyor-2
27	H-330	Centrifuge
26	S-320	Kristalizer
25	F-314	Hot Well
24	G-313	Steam Jet Ejector
23	E-312	Barometric Condensator
22	L-311	Pompa-7
21	V-310	Evaporator
20	E-142	Heater-4
19	L-221	Pompa-6
18	R-220	Netralizer
17	E-136	Heater-3
16	E-122	Heater-2
15	E-111	Heater-1
14	L-211	Pompa-5
13	R-210	Reaktor
12	L-141	Pompa-4
11	L-135	Pompa-3
10	M-134	Mixer Tank
9	F-133	Hopper Kalsium Hidroksida
8	J-132	Bucket Elevator-1
7	J-131	Screw Conveyor-1
6	L-121	Pompa-2
5	L-111	Pompa-1
4	F-140	Tangki Peranampung Asam Format
3	F-130	Gudang Kalsium Hidroksida
2	F-120	Tangki Peranampung Asetaldehid
1	F-110	Tangki Peranampung Formaldehid

KOMPONEN	1	2	3	4	5	6	7	8	9	10	11	12	13	14	15	16	17	18	19	20
CH2O(l)	8255,5262			2658,5593		2658,5593			877,3246		877,3246	833,4583	43,8662	43,8662	0,4387	43,4276	0,4343	0,0044	43,8618	43,8618
CH2O(g)							1063,4237	1781,2347												
CH3OH(l)	198,1326			198,1326		198,1326			65,3838		65,3838	62,1146	3,2692	3,2692	0,0327	3,2365	0,0324	0,0003	3,2689	3,2689
CH3OH(g)							79,2531	132,7489												
C2H4O(l)		2052,8979																		
Ca(OH)2(l)			2037,0675	310,7391																
CH2O2(l)					386,0891															
Ca(HCOO)2(l)				3031,7207		3577,4304			3577,4304	3398,5589	178,8715	178,8715	1,7887	177,0828	1,7708	0,0179	178,8536	178,8536		
C5H12O4(aq)				6344,4725		6344,4725			30,7098	29,1743	1,5355	1,5355	0,0154	1,5201	0,0152	0,0002	1,5353	1,5353		
C5H12O4(s)									6313,7627		6313,7627	6313,7627	63,1376	6250,6250	62,5063	0,6314	6313,1313	6313,1313		
H2O(l)	8057,3936	20,7363	4135,8644	12213,9944	42,8988	12408,0116			4094,6438		4094,6438	3889,9116	204,7322	204,7322	204,7117	1,5201	0,0000	204,7117	0,0205	0,0205
H2O(g)							4963,2046	8313,3677		8313,3677										
TOTAL	16511,0525	2073,6342	6172,9320	24757,6186	428,9878	25186,6064	6105,8814	10227,3513	14959,2551	8313,3677	14959,2551	8213,2178	6746,0373	6746,0373	270,1248	6477,4122	64,7589	205,3658	6540,6714	6540,6714

Digambar Oleh : Muhammad Ath Thariq Amir Chandra

NPM : 18031010163

Dosen Pembimbing : Ir. Bambang Wahyudi, MS.

FLOWSHEET PRA PERANCANGAN PABRIK PENTAERITRITOL DARI FORMALDEHID, ASETALDEHIDA DAN KALSIVM HIDROKSIDA SEBAGAI MEDIA ALKALI
 PROGRAM STUDI TEKNIK KIMIA
 FAKULTAS TEKNIK
 UNIVERSITAS PEMBANGUNAN NASIONAL "VETERAN" JAWA TIMUR
 2022